

# **FORECASTING DEMAND FOR ARVS PRELIMINARY ANALYSIS FROM THE GPRM DATA ADULT FORMULATIONS**

19 March 2015

# Denominator used for calculation: Years and number of patient-years

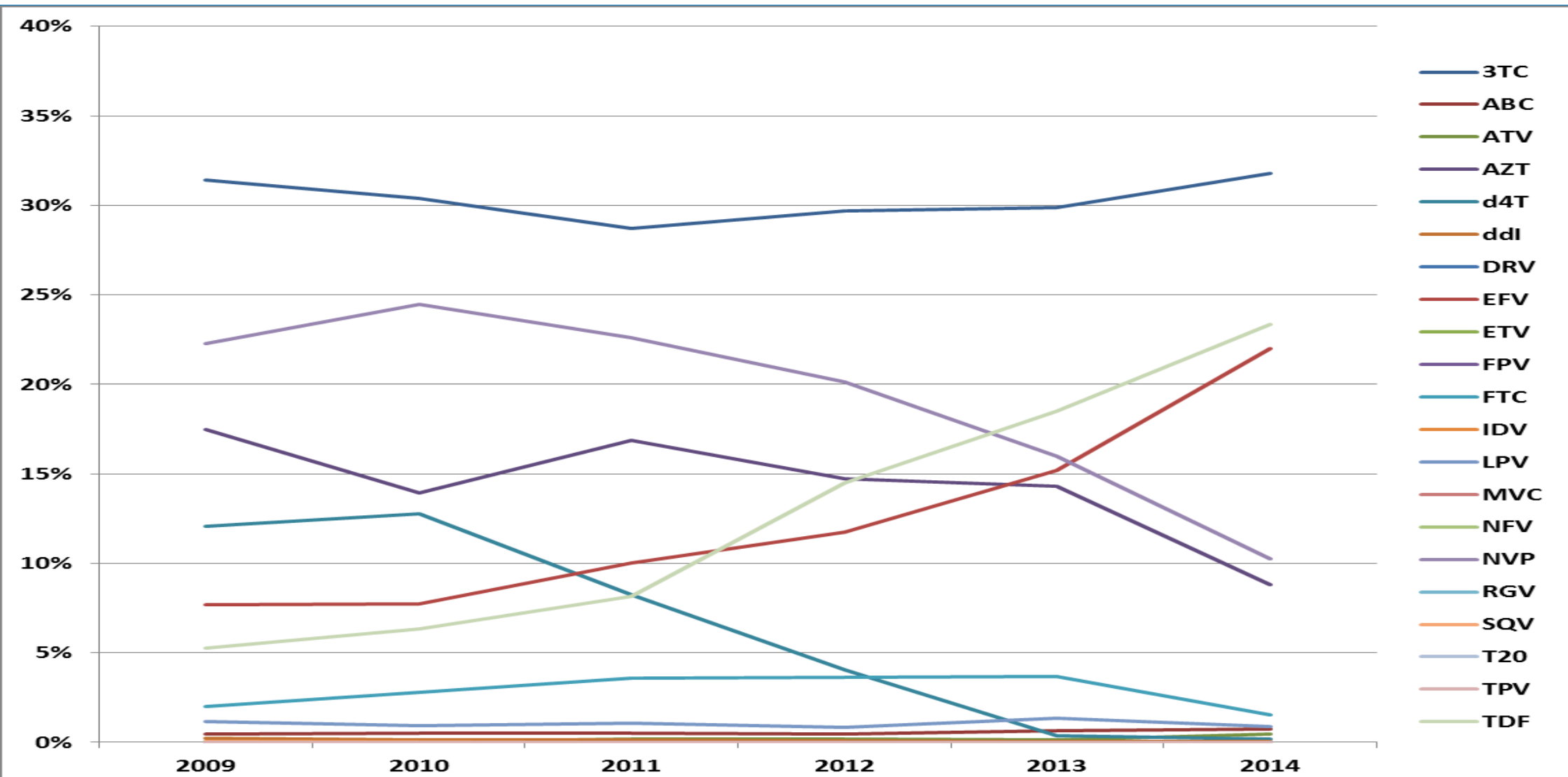
	2010	2011	2012	2013	2014
Thousands API Years	24,010	16,960	22,444	25,938	6,508
Thousands Patient Years	8,003	5,653	7,481	8,646	2,169
People receiving ART				11,700	
PYR reported in GPRM/People receiving ART				74%	



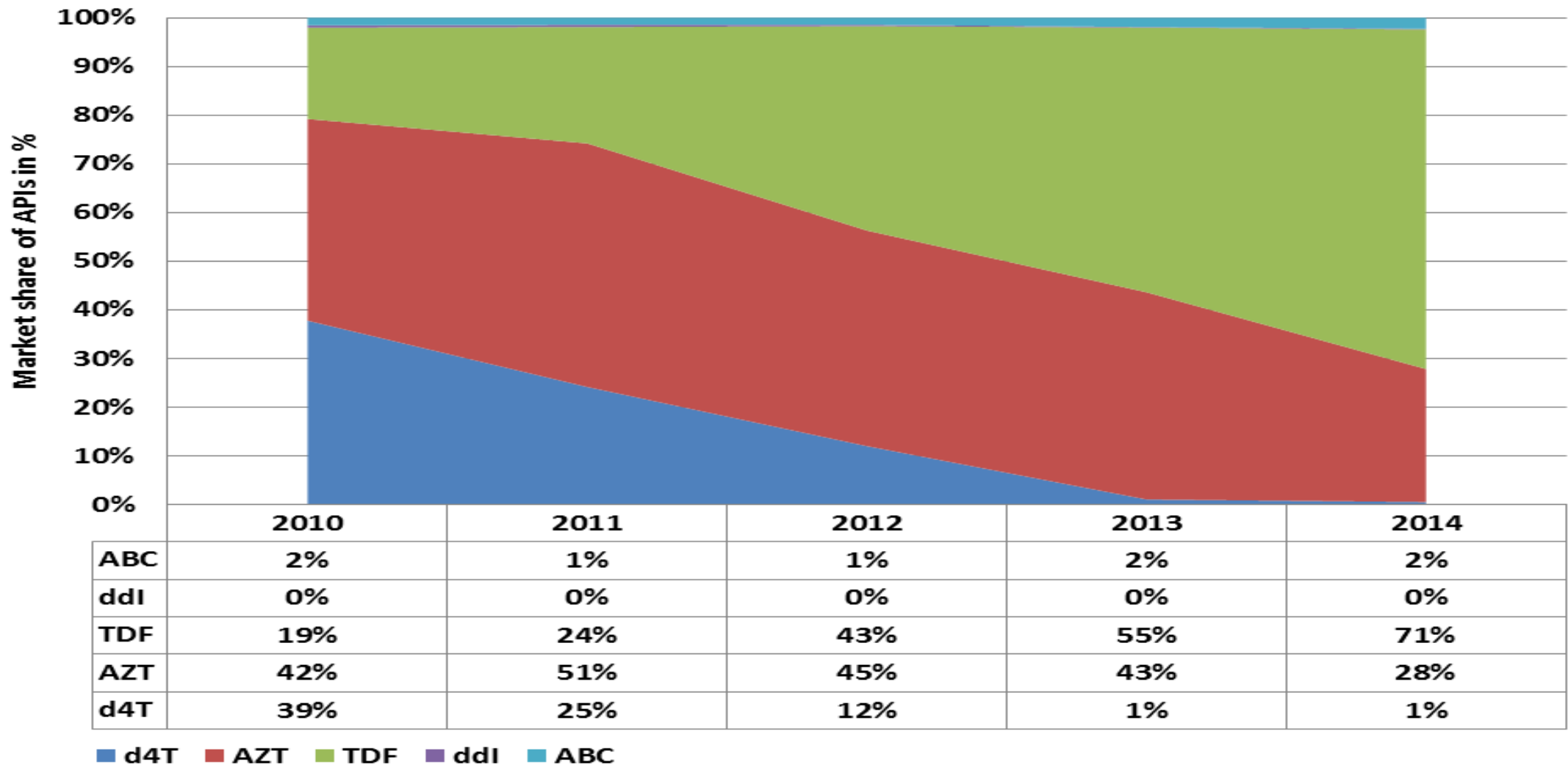
# Data included

- CHAI/UNITAID:
  - Data included up to 10.2014
- GFATM
  - PQR data included up to 01.2015 – but 2014 not complete given reporting delays in PQR
- SCMS
  - Data included up to 01.2015
- Rest of PEPFAR
  - Data included up to 12.2013
- UNICEF
  - Data included up to 08.2014
- IDA:
  - Data included up to 01.2015 (Q4 2015 not Included)
- MISSIONPHARMA
  - Data included up to 01.2015
- WHOCPS
  - Data included up to 01.2015

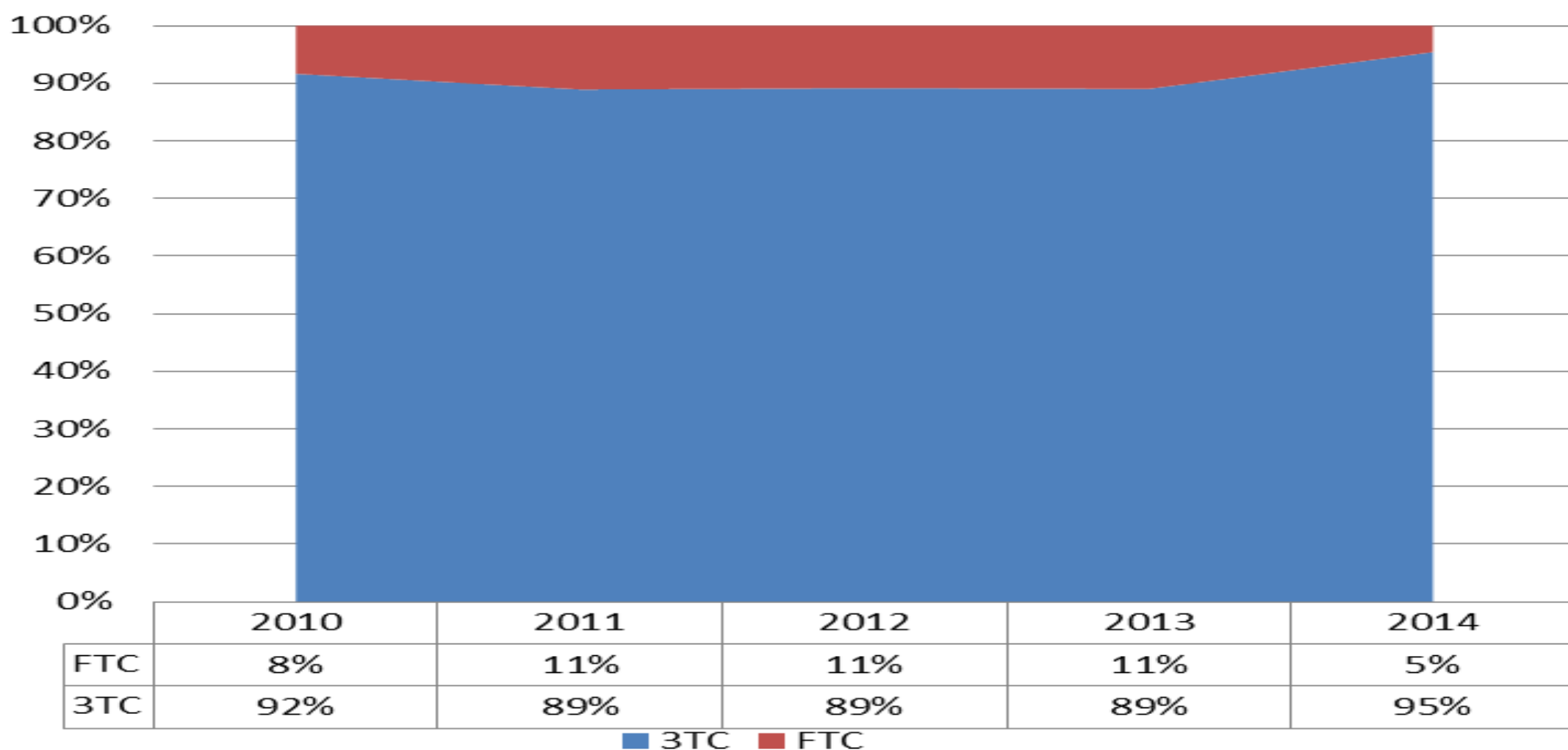
# Market share of different API (% of all ARVs in PYR)



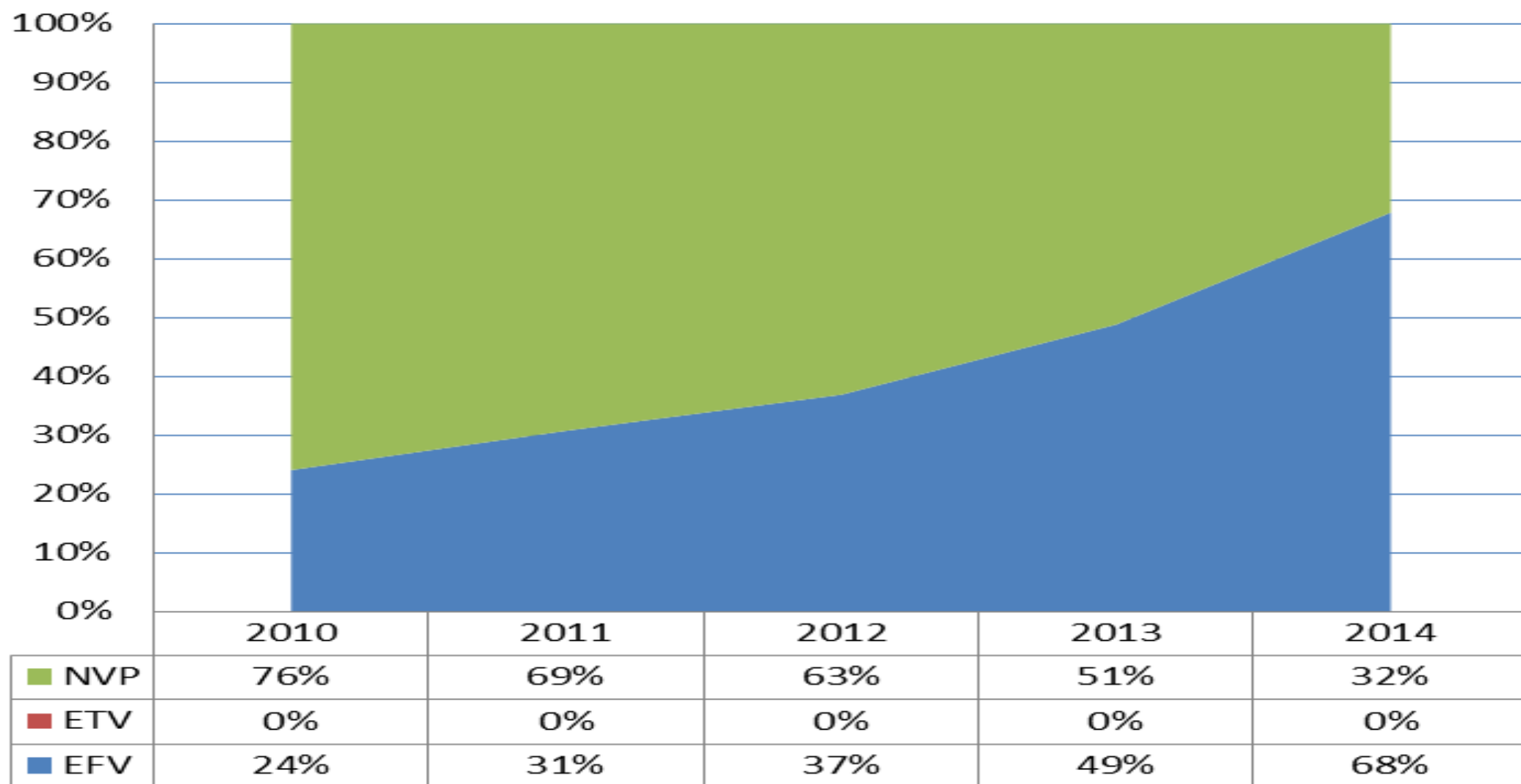
# Market share (% of total volume in PYR of nucleoside reverse transcriptase inhibitors, excluding FTC and 3TC)



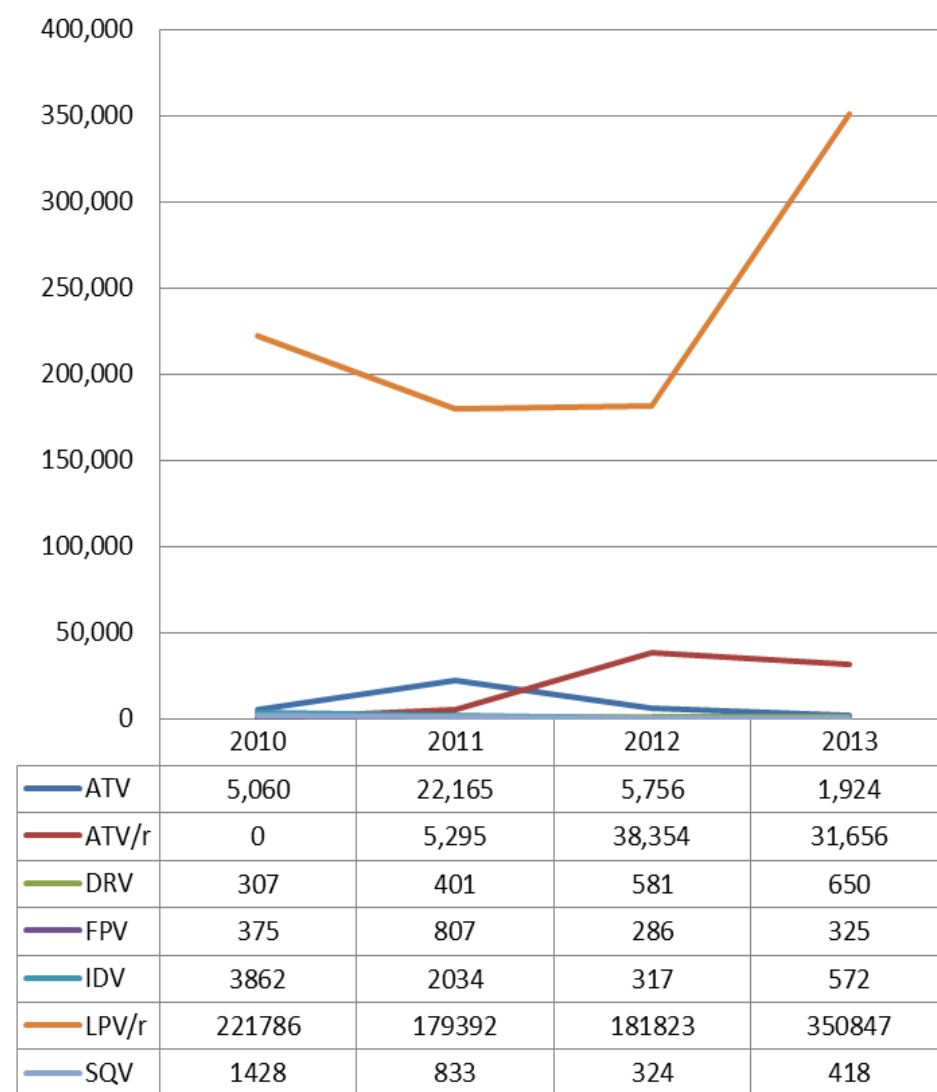
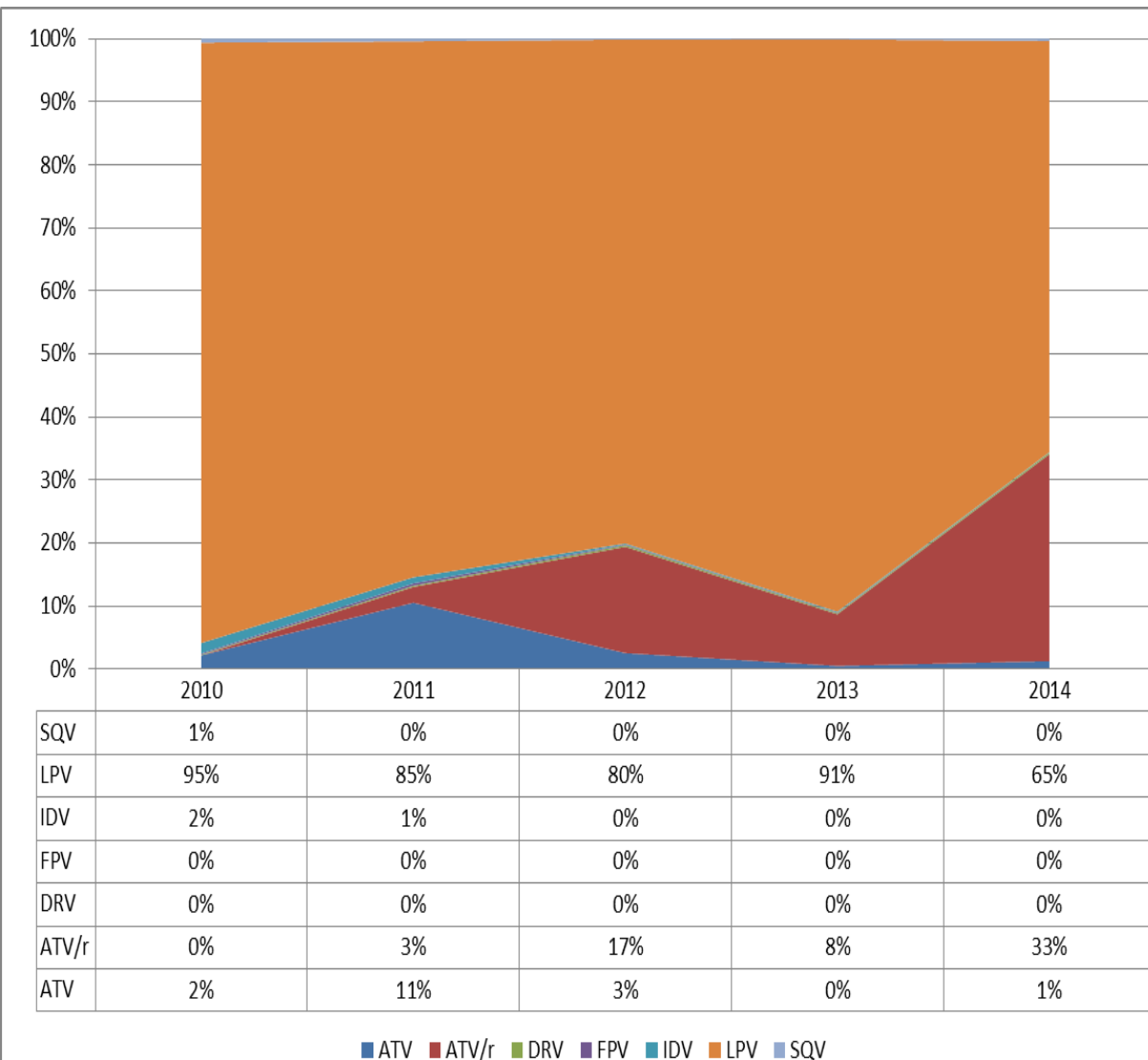
# Market share (% of total volume in PYR of 3TC and FTC)



# Market share (% of total volume in PYR of EFV, NVP and ETV)

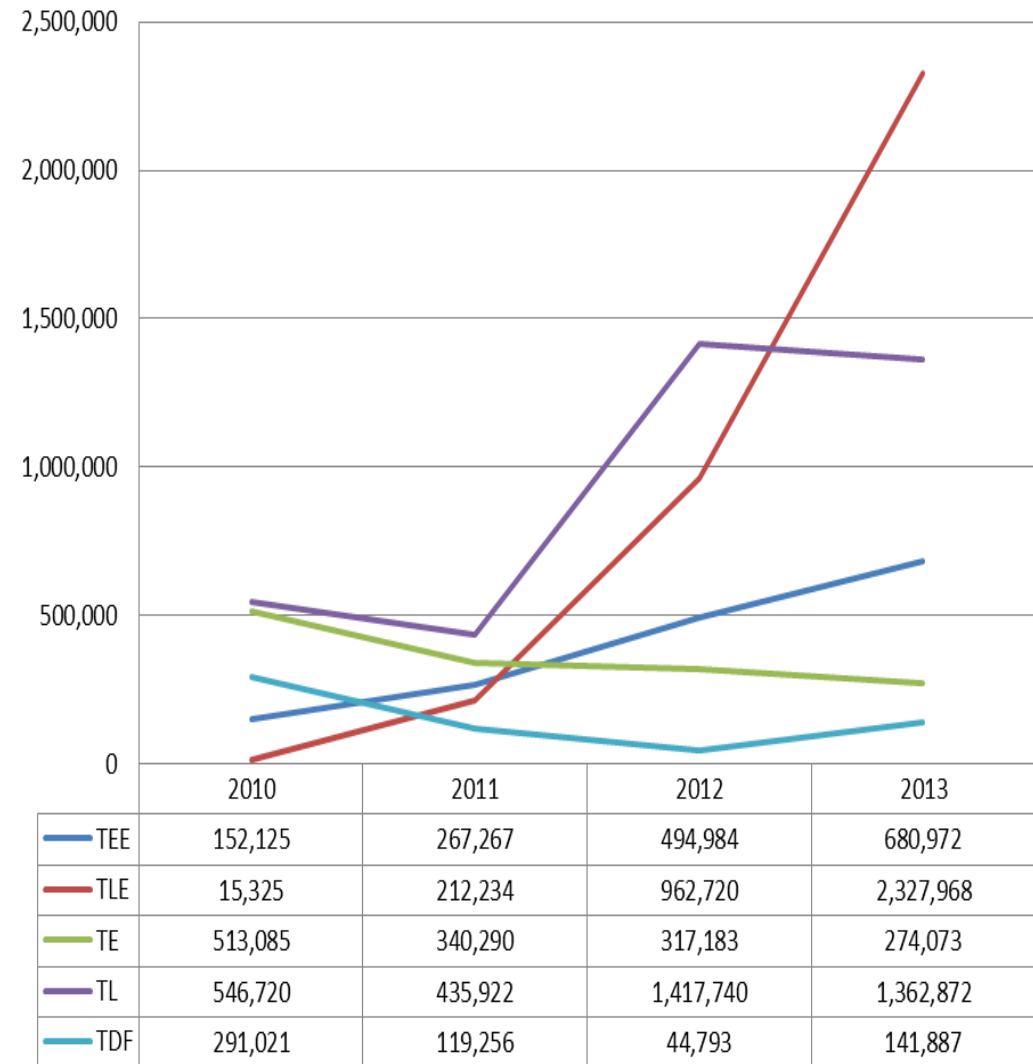
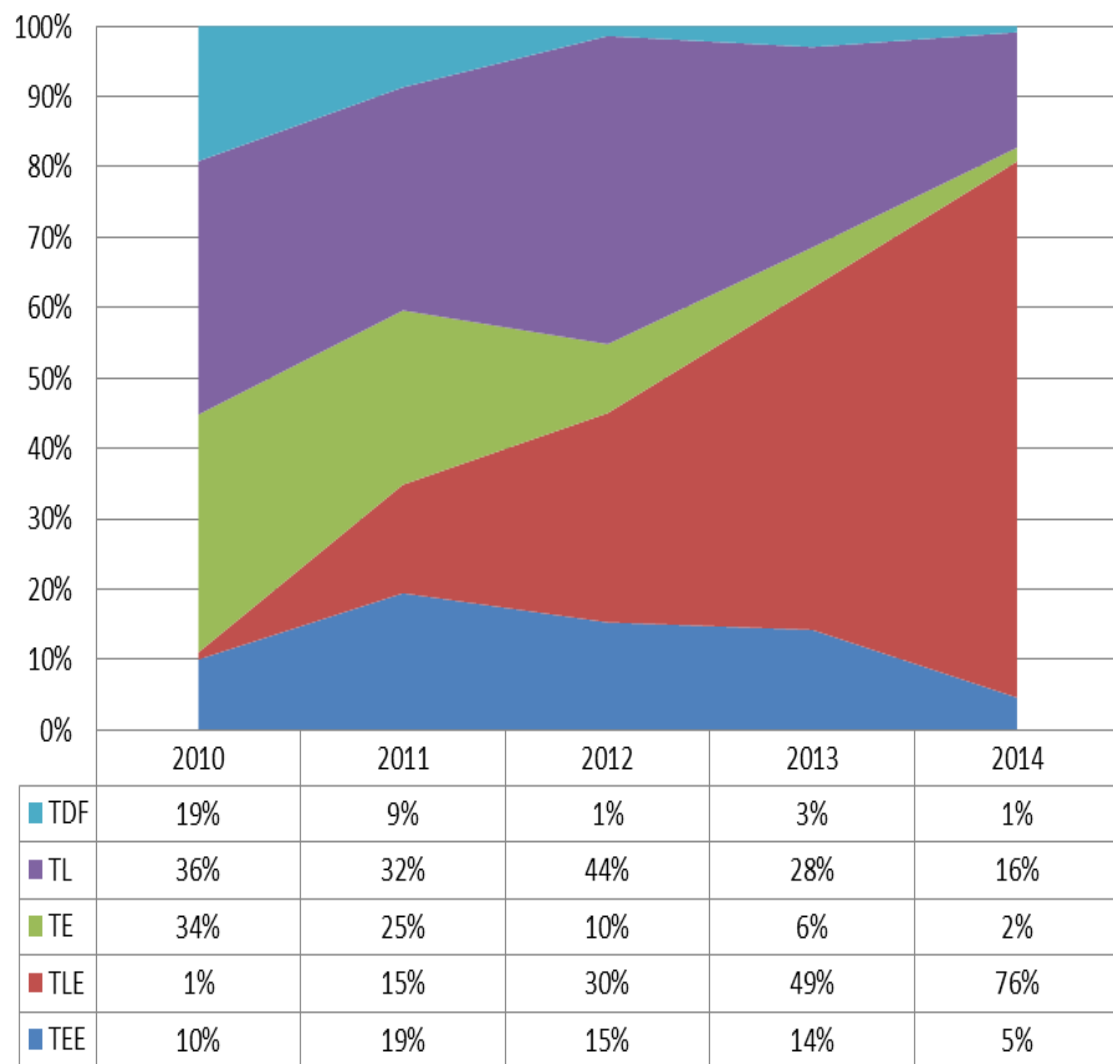


# Absolute uptake +Market share (% of total volume in PYR of protease inhibitors, excluding ritonavir)

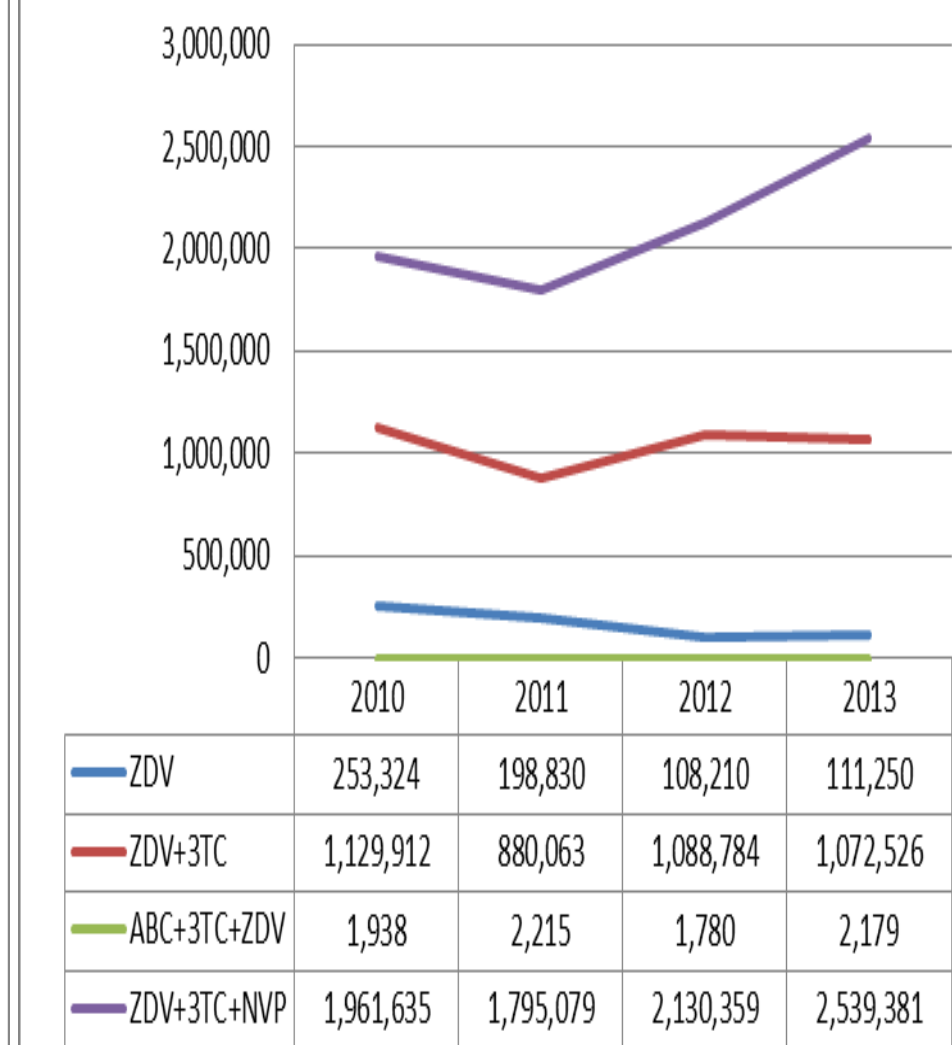
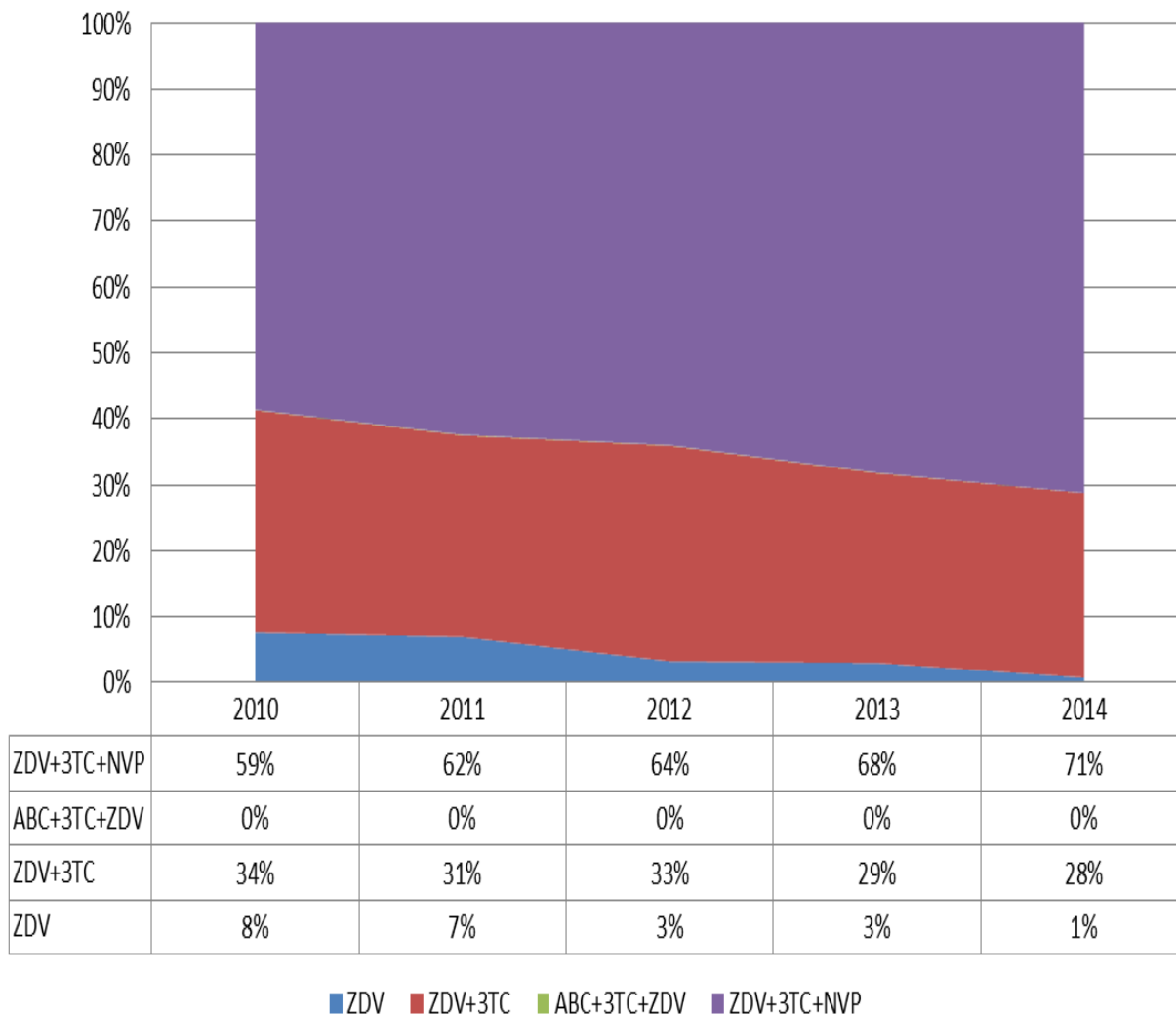




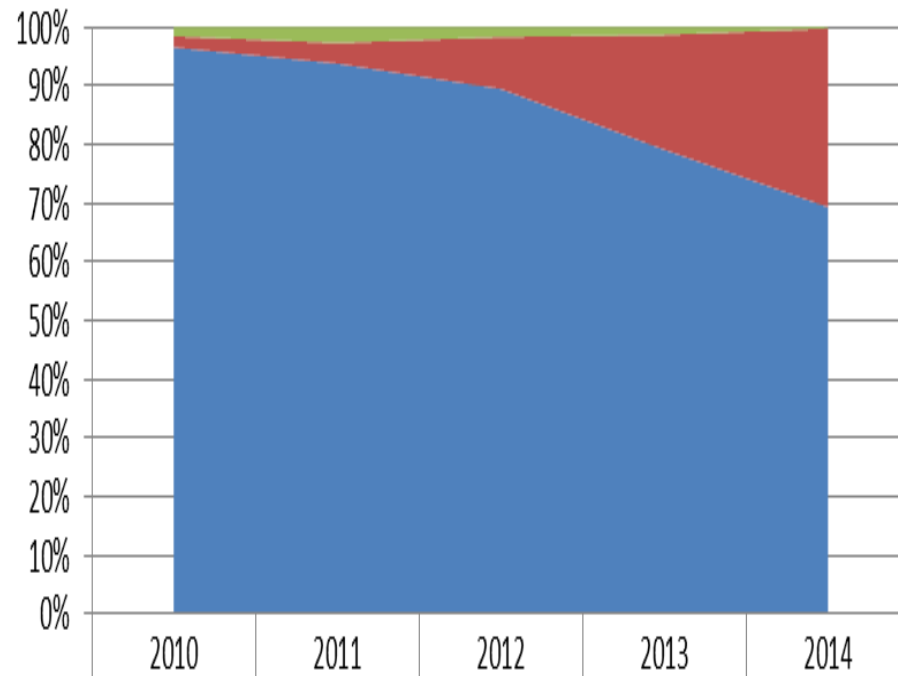
# Relative + Absolute uptake of tenofovir containing formulations



# Relative + Absolute uptake of zidovudine containing formulations

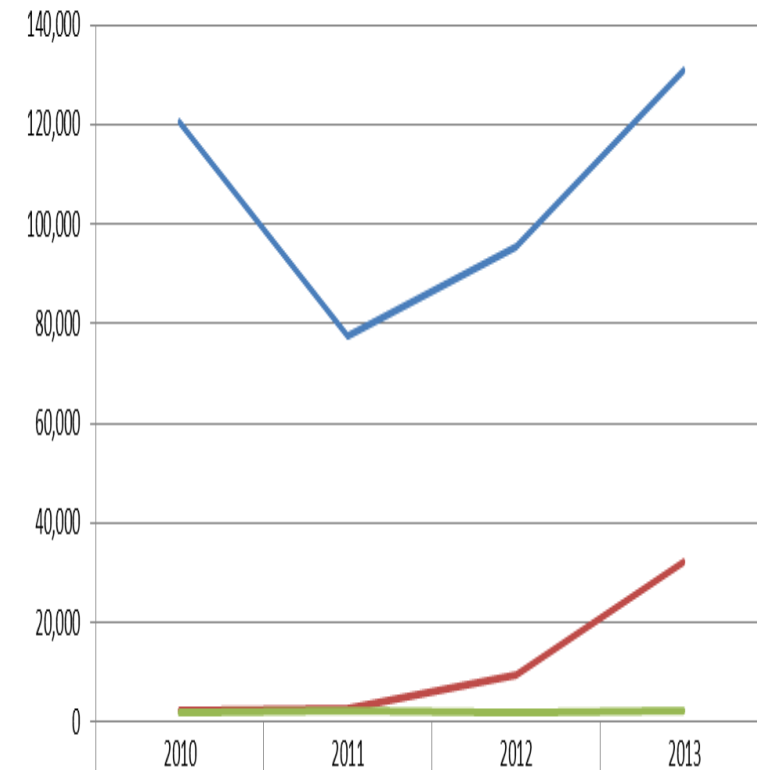


# Relative + Absolute uptake of abacavir containing formulations



ABC+3TC+ZDV 300mg+150mg+300mg	2%	3%	2%	1%	0%
ABC+3TC(600+300)mg	2%	4%	9%	20%	30%
ABC 300 mg	97%	94%	89%	79%	69%

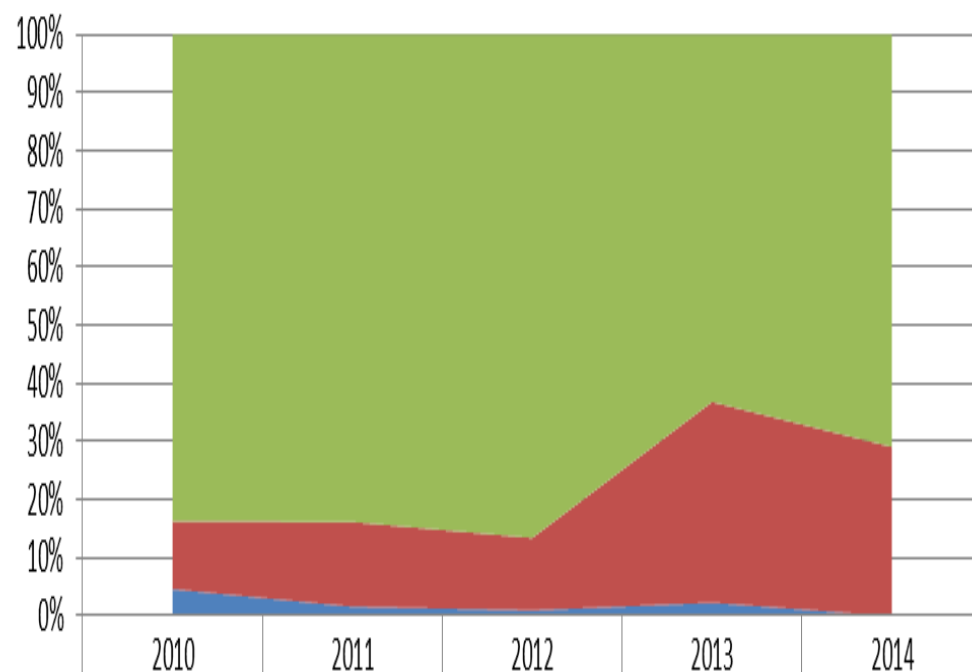
■ ABC 300 mg
 ■ ABC+3TC(600+300)mg
 ■ ABC+3TC+ZDV 300mg+150mg+300mg



ABC 300 mg	120,648	77,650	95,418	130,846
ABC+3TC(600+300)mg	2,371	2,914	9,444	32,316
ABC+3TC+ZDV 300mg+150mg+300mg	1,938	2,215	1,780	2,179

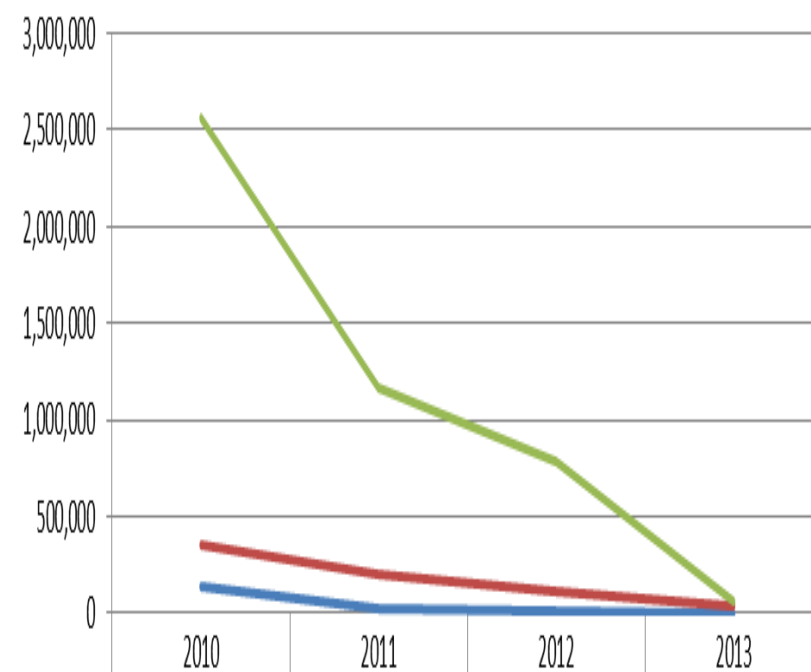
— ABC 300 mg
 — ABC+3TC(600+300)mg
 — ABC+3TC+ZDV 300mg+150mg+300mg

# Relative + Absolute uptake of stavudine containing formulations



	2010	2011	2012	2013	2014
3TC+NVP+D4T (150+200+30)mg	84%	84%	87%	63%	71%
3TC+D4T (150+30) mg	12%	15%	12%	35%	29%
d4T 30 mg	5%	2%	1%	2%	0%

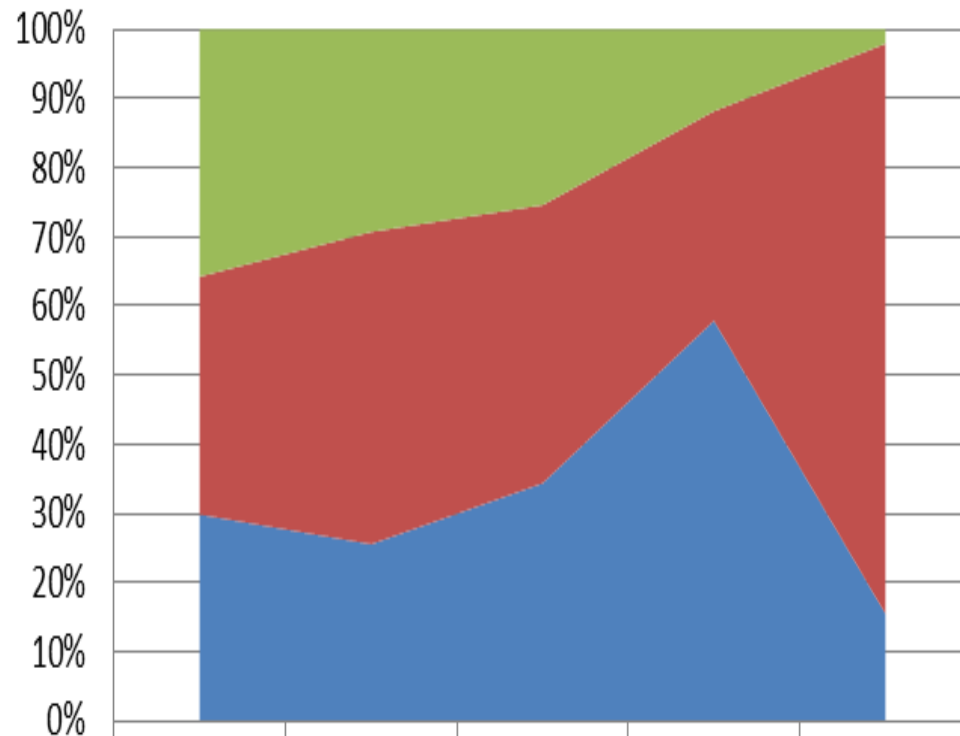
■ d4T 30 mg ■ 3TC+D4T (150+30) mg ■ 3TC+NVP+D4T (150+200+30)mg



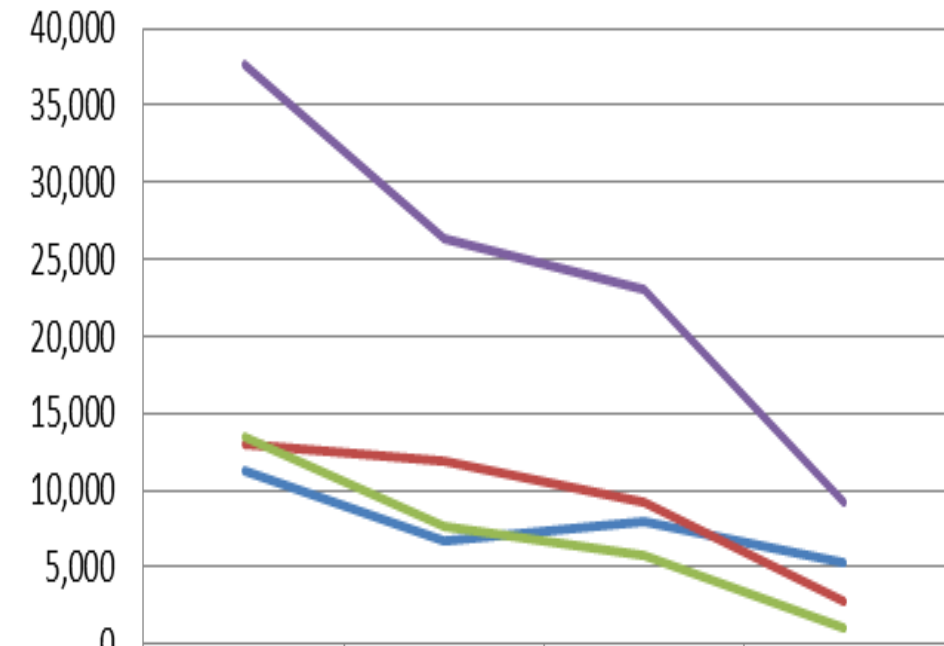
	2010	2011	2012	2013
d4T 30 mg	141,941	22,896	9,189	2,149
3TC+D4T (150+30) mg	357,070	202,501	112,423	31,878
3TC+NVP+D4T (150+200+30)mg	2,556,231	1,163,855	782,147	58,333

— d4T 30 mg — 3TC+D4T (150+30) mg — 3TC+NVP+D4T (150+200+30)mg

# Relative + Absolute uptake of didanosine formulations



	2010	2011	2012	2013	2014
ddi 200 mg	36%	29%	25%	12%	2%
ddi 250 mg	34%	45%	40%	30%	82%
ddi 400 mg	30%	26%	34%	58%	16%



	2010	2011	2012	2013
ddi 400 mg	11,247	6,725	7,907	5,349
ddi 250 mg	12,967	11,878	9,257	2,800
ddi 200 mg	13,468	7,696	5,841	1,092
	37,682	26,299	23,005	9,241